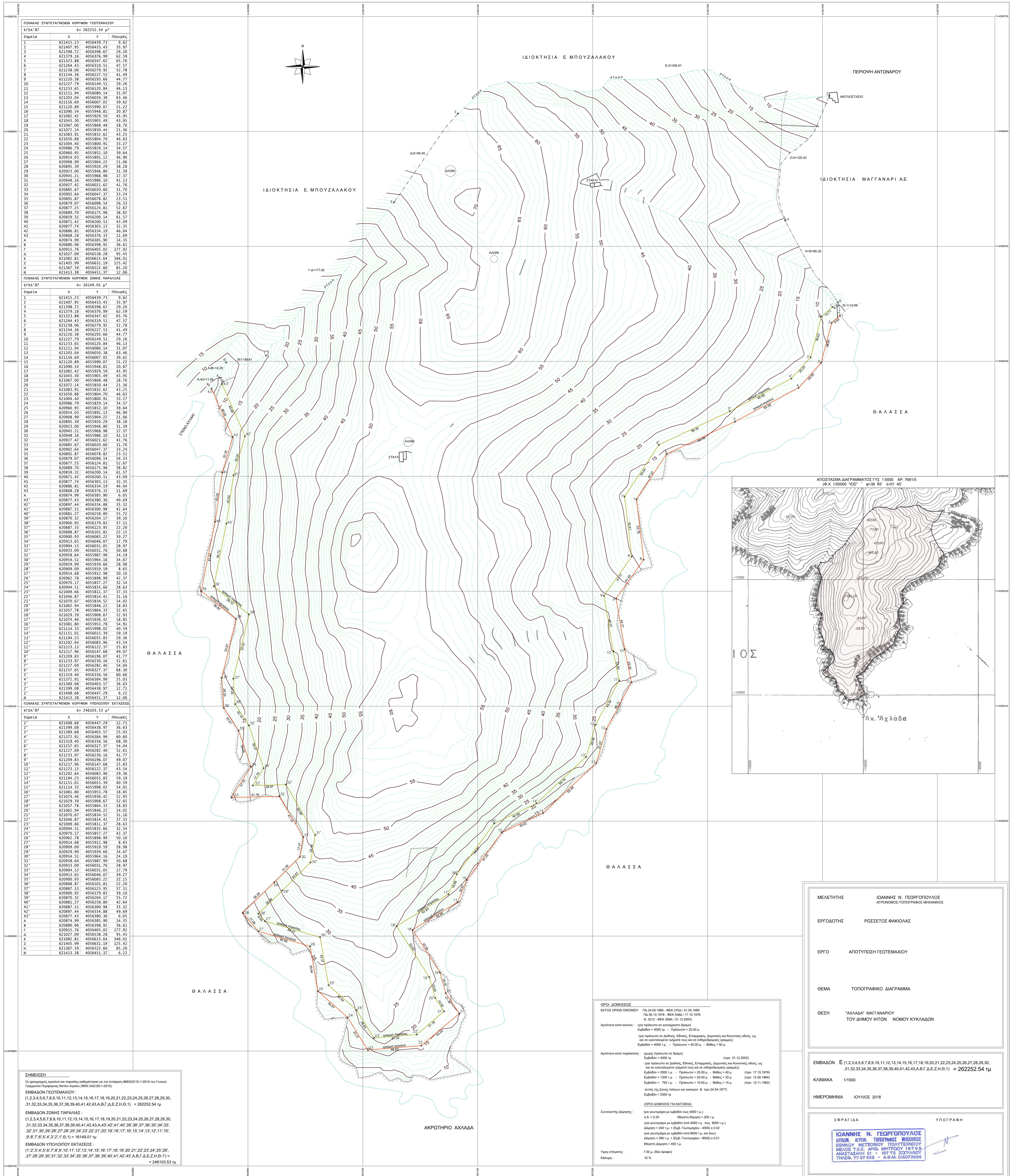


# ΤΟΠΟΓΡΑΦΙΚΗ ΧΑΡΤΑ



**ΠΙΝΑΚΑΣ ΣΥΝΤΕΤΑΓΜΕΝΩΝ ΚΟΡΥΦΩΝ ΓΕΩΤΕΜΑΧΙΟΥ**

Σημείο	X	Y	Ύψος
1	621415.23	4056439.73	9.62
2	621407.95	4056433.43	35.97
3	621398.72	4056398.67	29.20
4	621379.16	4056376.99	62.59
5	621323.88	4056347.62	65.76
6	622244.43	4056319.51	47.57
7	621238.06	4056279.92	52.78
8	621244.36	4056227.53	41.49
9	621220.38	4056181.66	44.77
10	621227.79	4056149.51	29.26
11	622232.65	4056120.84	46.13
12	621211.94	4056080.14	31.07
13	621203.04	4056050.38	63.46
14	621156.69	4056007.02	39.62
15	621120.89	4055990.07	51.22
16	621090.54	4055948.81	20.87
17	621082.42	4055929.59	45.95
18	621043.30	4055905.49	43.95
19	621067.00	4055868.48	18.76
20	621072.14	4055850.44	21.36
21	621068.81	4055832.62	43.25
22	621050.88	4055804.70	46.63
23	621094.40	4055800.91	33.27
24	620966.79	4055821.37	34.57
25	620960.95	4055852.10	39.64
26	620944.03	4055891.11	46.90
27	620908.99	4055904.22	21.06
28	620895.39	4055920.29	38.28
29	620923.00	4055946.80	31.39
30	620945.21	4055968.98	17.37
31	620948.16	4055986.10	41.13
32	620927.42	4056021.62	41.76
33	620885.67	4056020.60	31.70
34	620902.64	4056041.37	31.24
35	620891.87	4056078.82	23.51
36	620879.07	4056098.54	26.33
37	620877.25	4056124.81	52.67
38	620889.70	4056175.98	38.82
39	620859.31	4056200.14	61.57
40	620871.42	4056260.51	43.09
41	620877.74	4056303.13	32.35
42	620866.81	4056334.19	46.04
43	620868.28	4056376.33	11.69
A	620874.99	4056380.90	14.35
B	620860.96	4056385.92	16.41
Γ	620915.76	4056405.02	177.92
Δ	621017.09	4056338.28	95.45
Ε	621082.81	4056615.64	346.01
Ζ	621405.99	4056631.19	125.42
Η	621347.59	4056522.60	85.20
Θ	621413.38	4056451.37	12.06

**ΠΙΝΑΚΑΣ ΣΥΝΤΕΤΑΓΜΕΝΩΝ ΚΟΡΥΦΩΝ ΖΩΝΗΣ ΠΑΡΑΛΙΑΣ**

Σημείο	X	Y	Ύψος
1	621415.23	4056439.73	9.62
2	621407.95	4056433.43	35.97
3	621398.72	4056398.67	29.20
4	621379.16	4056376.99	62.59
5	621323.88	4056347.62	65.76
6	622244.43	4056319.51	47.57
7	621238.06	4056279.92	52.78
8	621244.36	4056227.53	41.49
9	621220.38	4056181.66	44.77
10	621227.79	4056149.51	29.26
11	622232.65	4056120.84	46.13
12	621211.94	4056080.14	31.07
13	621203.04	4056050.38	63.46
14	621156.69	4056007.02	39.62
15	621120.89	4055990.07	51.22
16	621090.54	4055948.81	20.87
17	621082.42	4055929.59	45.95
18	621043.30	4055905.49	43.95
19	621067.00	4055868.48	18.76
20	621072.14	4055850.44	21.36
21	621068.81	4055832.62	43.25
22	621050.88	4055804.70	46.63
23	621094.40	4055800.91	33.27
24	620966.79	4055821.37	34.57
25	620960.95	4055852.10	39.64
26	620944.03	4055891.11	46.90
27	620908.99	4055904.22	21.06
28	620895.39	4055920.29	38.28
29	620923.00	4055946.80	31.39
30	620945.21	4055968.98	17.37
31	620948.16	4055986.10	41.13
32	620927.42	4056021.62	41.76
33	620885.67	4056020.60	31.70
34	620902.64	4056041.37	31.24
35	620891.87	4056078.82	23.51
36	620879.07	4056098.54	26.33
37	620877.25	4056124.81	52.67
38	620889.70	4056175.98	38.82
39	620859.31	4056200.14	61.57
40	620871.42	4056260.51	43.09
41	620877.74	4056303.13	32.35
42	620866.81	4056334.19	46.04
43	620868.28	4056376.33	11.69
43'	620877.43	4056380.36	6.05
42'	620874.44	4056334.88	35.32
41'	620871.51	4056300.98	42.64
40'	620881.27	4056258.80	55.72
39'	620870.32	4056204.17	39.10
38'	620900.92	4056179.83	57.51
37'	620887.33	4056123.95	22.20
36'	620886.87	4056101.81	22.15
35'	620900.93	4056083.22	39.27
34'	620913.65	4056046.07	17.79
33'	620904.13	4056031.05	28.97
32'	620913.09	4056031.76	50.68
31'	620908.64	4055987.99	24.19
30'	620914.51	4055964.16	34.67
29'	620919.39	4055938.66	28.98
28'	620909.09	4055919.59	8.65
27'	620914.68	4055912.98	30.10
26'	620916.68	4055898.99	42.37
25'	620970.17	4055857.27	32.54
24'	620904.11	4055835.66	28.63
23'	621009.66	4055814.41	37.13
22'	621046.87	4055814.41	31.16
21'	621070.67	4055834.52	14.02
20'	621062.94	4055846.22	18.83
19'	621077.78	4055864.31	52.65
18'	621079.19	4055906.80	52.91
17'	621074.46	4055936.42	18.85
16'	621081.80	4055993.78	54.91
15'	621114.33	4055998.02	40.59
14'	621151.01	4056015.39	59.19
13'	621184.23	4056055.83	29.36
12'	621202.64	4056083.96	43.54
11'	621213.13	4056122.37	25.83
10'	621217.96	4056147.68	49.07
9'	621209.83	4056196.07	41.77
8'	621213.97	4056216.80	52.61
7'	621227.69	4056282.40	54.04
6'	621237.65	4056327.37	68.30
5'	621319.40	4056356.56	60.60
4'	621372.91	4056384.99	25.03
3'	621389.68	4056401.57	36.63
2'	621399.08	4056438.97	12.71
1'	621408.68	4056447.29	6.22
0	621413.38	4056451.37	12.06

**ΠΙΝΑΚΑΣ ΣΥΝΤΕΤΑΓΜΕΝΩΝ ΚΟΡΥΦΩΝ ΥΠΟΔΟΜΩΝ ΕΚΤΑΣΕΩΣ**

Σημείο	X	Y	Ύψος
1	621408.68	4056447.29	12.71
2'	621399.08	4056438.97	16.63
3'	621389.68	4056403.57	25.03
4'	621372.91	4056384.99	60.60
5'	621319.40	4056356.56	68.30
6'	621237.69	4056327.37	54.04
7'	621227.69	4056282.40	52.61
8'	621233.97	4056230.16	41.77
9'	621209.83	4056196.07	49.07
10'	621217.96	4056147.68	25.83
11'	621223.13	4056122.37	43.54
12'	621202.64	4056083.96	29.36
13'	621194.23	4056055.83	59.19
14'	621213.01	4056015.39	40.59
15'	621114.33	4055998.02	54.91
16'	621081.80	4055953.78	38.85
17'	621074.46	4055916.42	52.93
18'	621079.19	4055906.80	52.65
19'	621077.78	4055864.31	18.83
20'	621062.94	4055846.22	14.02
21'	621070.67	4055834.52	31.16
22'	621046.87	4055814.41	37.13
23'	621009.66	4055811.37	28.63
24'	620945.11	4055835.66	32.54
25'	620970.17	4055857.27	42.37
26'	620962.78	4055898.99	30.10
27'	620914.68	4055912.98	8.65
28'	620909.09	4055919.59	28.98
29'	620919.39	4055938.66	34.67
30'	620914.51	4055964.16	24.19
31'	620918.64	4055987.99	50.68
32'	620913.09	4056031.76	28.97
33'	620904.13	4056031.05	17.79
34'	620913.65	4056046.07	39.27
35'	620900.93	4056083.22	22.15
36'	620888.87	4056101.81	22.20
37'	620887.33	4056123.95	57.51
38'	620900.92	4056179.83	39.10
39'	620870.32	4056204.17	55.72
40'	620881.27	4056258.80	42.64
41'	620887.51	4056300.98	35.32
42'	620874.44	4056334.88	49.69
43'	620877.43	4056380.36	6.05
A	620874.99	4056380.90	14.35
B	620860.96	4056385.92	16.41
Γ	620915.76	4056405.02	177.92
Δ	621017.09	4056338.28	95.45
Ε	621082.81	4056615.64	346.01
Ζ	621405.99	4056631.19	125.42
Η	621347.59	4056522.60	85.20
Θ	621413.38	4056451.37	12.06

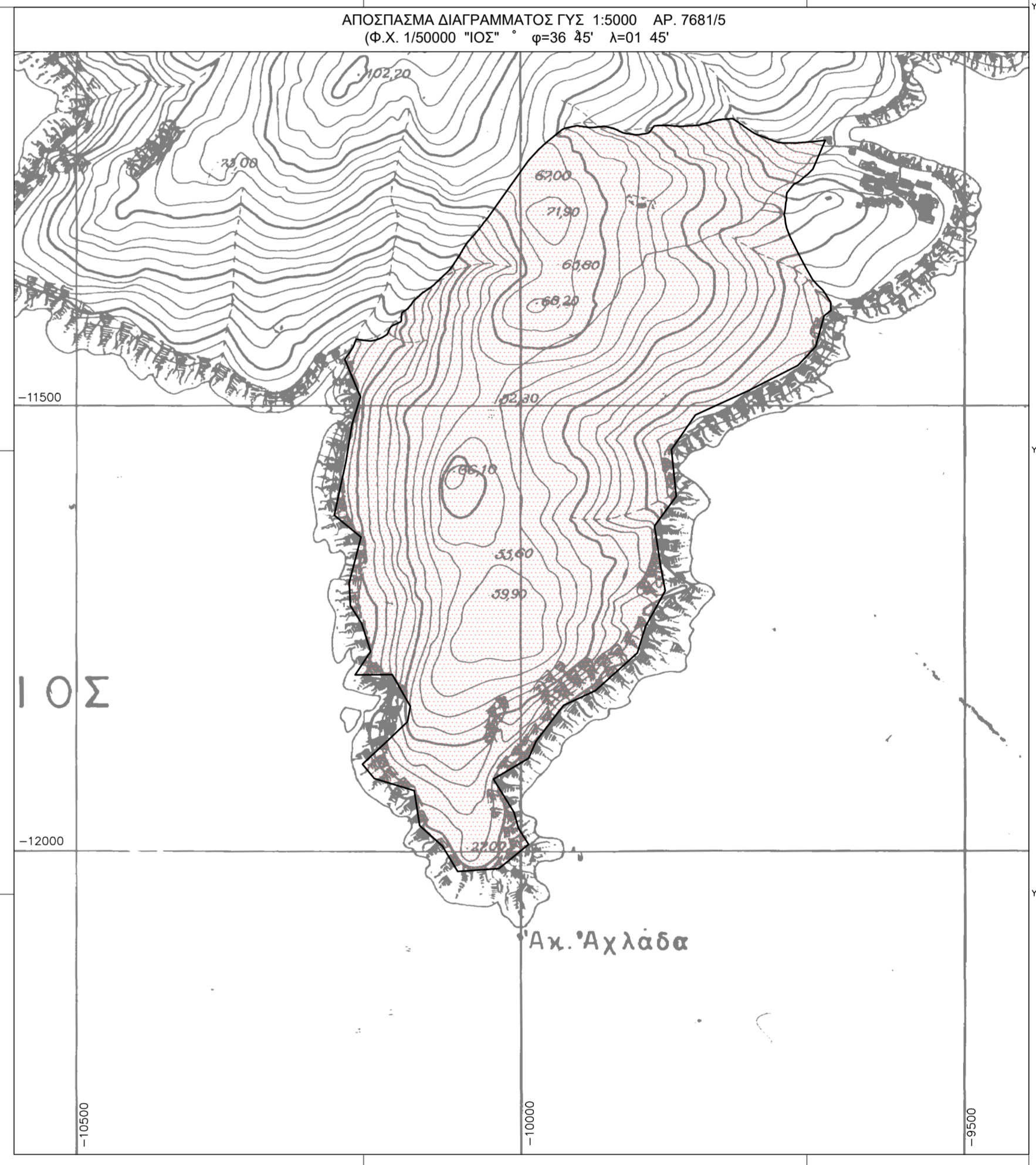
**ΣΗΜΕΙΩΣΗ**

Οι οριζοντιογραφικές και παραλλήλες καθορίστηκαν με τη σφαιρική 888523'15-12010 του Γενικού Γραμματέα Πελοποννήσου Νέστορα Αγγίτου (Φ.Χ. 24/028-12010).

**ΕΜΒΑΔΟΝ ΓΕΩΤΕΜΑΧΙΟΥ:**  
(1,2,3,4,5,6,7,8,9,10,11,12,13,14,15,16,17,18,19,20,21,22,23,24,25,26,27,28,29,30,31,32,33,34,35,36,37,38,39,40,41,42,43,Α,Β,Γ,Δ,Ε,Ζ,Η,Θ,Ι) = 262252.54 τμ

**ΕΜΒΑΔΟΝ ΖΩΝΗΣ ΠΑΡΑΛΙΑΣ:**  
(1,2,3,4,5,6,7,8,9,10,11,12,13,14,15,16,17,18,19,20,21,22,23,24,25,26,27,28,29,30,31,32,33,34,35,36,37,38,39,40,41,42,43,Α,Β,Γ,Δ,Ε,Ζ,Η,Θ,Ι) = 262252.54 τμ

**ΕΜΒΑΔΟΝ ΥΠΟΔΟΜΩΝ ΕΚΤΑΣΕΩΣ:**  
(1',2',3',4',5',6',7',8',9',10',11',12',13',14',15',16',17',18',19',20',21',22',23',24',25',26',27',28',29',30',31',32',33',34',35',36',37',38',39',40',41',42',43',Α,Β,Γ,Δ,Ε,Ζ,Η,Θ,Ι) = 246103.53 τμ



**ΟΡΟΙ ΔΟΜΗΘΕΩΣ**

ΕΚΤΟΣ ΟΡΩΝ ΟΧΛΙΣΜΟΥ: Πλ. 24.05.1985 - ΦΕΚ 2706 / 31.05.1985  
Πλ. 05.10.1978 - ΦΕΚ 5305 / 17.10.1978  
Ν. 3212 - ΦΕΚ 3068 / 31.12.2003

Απόλυτη κατά κλίση: (για πρότυπο σε κλίση 1:1000) Ύψος = 4000 τμ - Πρότυπο = 25.00 μ

Απόλυτη κατά παράκλιση: (για πρότυπο σε κλίση 1:1000) Ύψος = 4000 τμ - Πρότυπο = 45.00 μ - Βάθος = 10 μ

Συντελεστής Διάρθρωσης: (για πρότυπο σε κλίση 1:1000) Διάρθρωση = 200 τμ - Ύψος = 2000 τμ - Βάθος = 40 μ

Υψος κτίσματος: 7.50 μ (δύο ορόφοι)

Κλίση: 10 %

**ΜΕΛΕΤΗΤΗΣ** ΙΩΑΝΝΗΣ Ν. ΓΕΩΡΓΟΠΟΥΛΟΣ  
ΑΡΧΙΤΕΚΤΟΝΟΣ-ΤΟΠΟΓΡΑΦΟΣ ΜΗΧΑΝΙΚΟΣ

**ΕΡΓΟΔΟΤΗΣ** ΡΩΣΣΕΤΟΣ ΦΑΚΙΟΛΑΣ

**ΕΡΓΟ** ΑΠΟΤΥΠΩΣΗ ΓΕΩΤΕΜΑΧΙΟΥ

**ΘΕΜΑ** ΤΟΠΟΓΡΑΦΙΚΟ ΔΙΑΓΡΑΜΜΑ

**ΘΕΣΗ** 'ΑΧΑΪΑ' ΜΑΓΓΑΝΑΡΙΟΥ ΤΟΥ ΔΗΜΟΥ ΙΤΙΩΝ ΝΟΜΟΥ ΚΥΚΛΑΔΩΝ

**ΕΜΒΑΔΟΝ** Ε(1,2,3,4,5,6,7,8,9,10,11,12,13,14,15,16,17,18,19,20,21,22,23,24,25,26,27,28,29,30,31,32,33,34,35,36,37,38,39,40,41,42,43,Α,Β,Γ,Δ,Ε,Ζ,Η,Θ,Ι) = 262252.54 τμ

**ΚΛΙΜΑΚΑ** 1/1000

**ΗΜΕΡΟΜΗΝΙΑ** ΙΟΥΛΙΟΣ 2018

**ΣΦΡΑΓΙΔΑ** **ΥΠΟΓΡΑΦΗ**

**ΙΩΑΝΝΗΣ Ν. ΓΕΩΡΓΟΠΟΥΛΟΣ**  
ΔΙΠΛΩΜ. ΑΡΧΙΤ. ΤΟΠΟΓΡΑΦΟΣ ΜΗΧΑΝΙΚΟΣ  
ΕΘΝΙΚΟΥ ΜΕΤΣΟΒΙΟΥ ΠΟΛΥΤΕΧΝΕΙΟΥ  
ΜΕΛΟΣ Τ.Ε.Ε. ΑΡΧ. ΜΗΤΡΩΟΥ 187 Θ.Β.  
ΑΝΑΣΤΑΣΙΑΝ 51 - 167 52 ΣΥΡΡΑΧΟΥ  
ΤΗΛΕΦ. 97 97 688 - Α.Φ.Μ. 010579504